

Pixelache Helsinki 2013 Report

Pixelache's 2013 activities have been marked by the endeavour of organising Pixelache Helsinki festival as dual-city event held in both Helsinki & Tallinn-Naissaar for the first time in spring, built upon previous networking and inter-personal connections, strengthening our ties to the Estonian cultural scene.

Together with the agroecology focused Ruokatuulevaisuus association, Pixelache also successfully co-organised in the autumn 'Foodcycle', the first transdisciplinary food festival in Helsinki.

Our year-round education & outreach programme 'Pixeliversity' has deployed a large amount of public events involving a wide and diverse range of collaborations in Helsinki and beyond. Special effort has been put into different archiving processes and into streaming strategies, which have helped increase our online audience significantly.

Pixelache Network's European collaboration has been boosted by the start of our EU Grundtvig-funded network project 'Open-Sourcing festivals', exploring concrete ways to share the process for organizing a festival, so that other groups can use it themselves. This project continues until 2015.

Our association has also welcomed new members and has benefitted from 3 internships in the past year, from Riga, Vilnius & Strasbourg (supported by EU Erasmus scheme). In addition to employing one full-time coordinator and another part-time, Pixelache has been able to create a job for long-term association member Mikko Laajola, with Ministry of Labour palkkatuki support. In addition, through its Pixeliversity programme structure, Pixelache as a platform, has supported a wider community of practitioners in various events and activities.

www.pixelache.ac

PIXELACHE **Piknik Frequency**

Participants & Audience in Events 2013

Not less than 35 public events offering various entry points for the general public were organised by pixelache in 2013. Our program included lectures, workshops, expeditions, public space interventions, gatherings, unconferences and 2 major festivals (Pixelache Helsinki and Foodycle) held in Finland, mainly in Helsinki. It involved over 30 collaborating organizations and partner venues. In addition, Pixelache as a platform, has supported through these various events and activities a wider community of practitioners than ever before.

ALL ACTIVITIES TOGETHER

TOTAL AUDIENCE/ PARTICIPANTS = 2703

TOTAL ONLINE REAL TIME AUDIENCE via Bambuser = 1745

GRAND TOTAL OFFLINE + ONLINE AUDIENCE = 4448

> Pixelversity Programme 2013

www.pixelache.ac/pixelversity/programme-2013

Total Audience/Participants = 1425

Total Online Audience via Bambuser = 1320

Total Offline + Online Audience = 2745

> Pixelache Festival 16-19.5.2013, Helsinki & Tallinn

<http://www.pixelache.ac/festival-2013>

Total Audience/Participants = 548

Total Online Audience via Bambuser = 265

Total Offline + Online Audience = 813

> Foodycle Festival, 12-13.9.201, Helsinki

www.foodycle.info

Total Audience/Participants = 730

Total Online Audience via Bambuser = 160

Total Offline + Online Audience = 890

Online Visitors & Followers 2013

Visitors on www.pixelache.ac

2013 Visit Total 83,954

Average Visitors per month 6996

Unique Visitors Total 70,684

Average Unique Visitors per month 5890

Page Views Total: 287,297

Pages / Visit: 1.54

Avg. Visit Duration: 00:01:01

Jan: Visits 4,292 (Unique Visitors 2,872)

Feb: Visits 6,748 (Unique Visitors 5,952)

Mar: Visits 8,708 (Unique Visitors 7,668)

Apr: Visits 14,018 (Unique Visitors 12,346)

May: Visits 16,143 (Unique Visitors 13,570)

Jun: Visits 11,530 (Unique Visitors 10,192)

Jul: Visits 6,030 (Unique Visitors 5,242)

Aug: Visits 3,587 (Unique Visitors 2,642)

Sep: Visits 3,322 (Unique Visitors 2,490)

Oct: Visits 3,847 (Unique Visitors 3,072)

Nov: Visits 3,153 (Unique Visitors 2,512)

Dec: Visits 2,576 (Unique Visitors 2,126)

Demographics

> Countries

1. United States 22,435(44.70%)

2. Finland 6,884(13.72%)

> Cities

1. Helsinki 5,086 10.13 = %2.

2. (not set) 1,597 3.18 = %3.

3. Tallinn 719 1.43 = %4.

4. Paris 715 1.4 = 2%

Facebook

Pixelache Facebook Page: 1,733 Likes

Pixelaching Facebook Group: 297 members

Trashlab Facebook Group: 391 members

Twitter

Followers 1539

Bambuser

Total Online Audience 2013: 1745

Vimeo.com

Total Play 2013 Vimeo Videos: 1130

Creative Coding for Live Visuals 1: 308 plays

Creative Coding for Live Visuals 2: 97 plays

Pixelache Autonomous Drone Broadcast: 272 plays

Pixelache Keynote Mary Mellor: 58 plays

Pixelache Keynote Spatial Intelligence Unit &

Kristi Grisakov: 35 plays

Pixelache Dual-City Festival 2013: 302 plays

Pixelache Activities Around The Year

Pixelversity 2013



Related pedagogy on Pixelache's as main fields of interest aims to support the regional grassroots scene(s), and is based upon learning from experience and from peers: Learning by doing, and doing it together. The programme variably consists of presentations, workshops, camps, expeditions and other events: Some share and sustain ongoing local practice; others benefit from serendipity and specialists visiting Helsinki; or support activity that happens outside the usual locations, including the nearby regions.

Pixelversity aims to be a 'learning bridge' between practitioners, cultural and non-profit organisations, interested individuals and larger institutions, and an outreach programme extending beyond Helsinki. Consideration is given to the relationships between the different activities, and how they may build up accumulative knowledge and skills towards future Pixelache events

The Pixelversity programme for 2013 continued several themes continuing on from 2012 with new names, and a couple new addition themes.

Pixelversity / Waste/d



This theme continued exploring experimental art-design-technology practice between hacker and maker cultures, in the context of re/up-cycling and the increased availability of new fabrication tools. Trashlab's objective is to build up a community of people (artists, designers, hackers, makers, re/up-cyclers, activists), who are concerned with material

and who are concerned with material and electronic waste in contemporary society, and tackle this problem with creative and tangential approaches.

The Waste/d theme was the umbrella for regular Trashlab Repair Cafe events initiated by Päivi Raivio (see photo above),

the Recycling Olympic Games initiated by Culture Factory Polymer (EE) and taking a place in connection with Pixelache 2013 Festival, a contribution of Trashlab & Recycling Olympic Games to Kierrätystehdas event, as well as Waste management expeditions and an ongoing WasteLog exposing online the material waste we don't normally see.

Programme of events

23.2. Trashlab Repair Cafe at Made in Kallio
15.3. Waste expedition to Zen Robotics installation at Viikintie, Helsinki

23.3. Trashlab Repair Cafe at Helsinki Hacklab

20.4. Trashlab Repair Cafe at Kulmahuone

26.4. Waste expedition to HSY/Helsingin vesi + Metsäpirtti

4-5.5. Kierrätystehdas Festival collaboration ((Trashlab Repair Cafe, Recycling Olympic Games sign up stall)

5-12.5. Recycling Olympic Games in Helsinki + Waste/d expedition in Helsinki metropolitan region

22.5. Trashlab Repair Cafe at Siivouspäivän Etkot

15.6. Trashlab Repair Cafe at Kääntöpöytä

19-21.7. Wasteland Festival contribution in Kouvola.

27.7. Trashlab Repair Cafe at Espoo kunsthalle

29-30.8. Copper Scavenging Waste expedition

31.8. Trashlab Repair Cafe at Horisontti, Malmin kartano

2.10. Trashlab Repair Cafe at Kohtaamispaikka

16.11. Trashlab Repair Cafe at Aalto Fab Lab

21.11. Waste expedition to Bio- & Landfill waste management plant at Ämmäsuo

14.12. Trashlab Pikkujou: Reflections and future plans

Pixelversity / Waste/d

Recycling Olympic Games



Recycling Olympic Games (ROG) is an alternative sports event that is focused on creative waste-reuse, where international teams compete for the title of "Upcycling Champion of the Gulf of Finland" and a trophy. The Games are held over a week in early May from 6-12.5., consisting of a variety of tasks each team competed in the competition. In this pilot experiment year, there were two teams : Home and Away. The Recycling Olympic Games village was based in Suvilahti, to the grassy-side of Eesti Maja.

Some of us recycle for financial sustainability, others for convenience and still more for ecological ideals but for whatever the reason, we can improve on our practices through the competitive, peer-learning environment created for ROG. Competition events challenged the teams with a variety of tasks from building dwellings, to cooking, to fashion with the constraint of no budget, aside from some basic devices for connecting materials. For one week competitors 'lived', 'slept', and ate re-purposing the detritus of Helsinki.

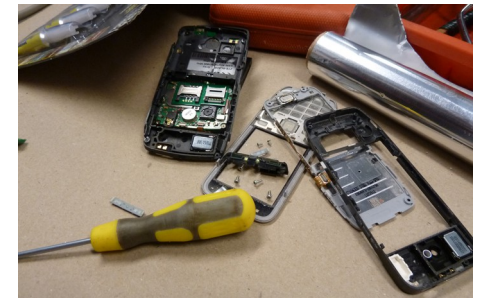
www.pixelache.ac/pixelversity/rog

Waste Expeditions



As part of the Waste/d theme of Pixelversity 2013 programme, Pixelache arranged a handful of expedition visits to different waste-management sites (mostly in Helsinki metropolitan region). We endeavored to learn about our material wastage which we typically contribute as part of everyday urban life, but rarely see again in its collective form.

Trashlab Repair Cafes



Trashlab Repair Cafe monthly events explore experimental art-design-technology practice between hacker and maker cultures, in the context of re/up-cycling and the increased availability of new fabrication tools.

www.trashlab.info

Pixeliversity / Techno-Ecologies



A continuation of the 2012 theme 'Ecosystem & Environmental Monitoring', This study group/cluster of learning opportunities is related to ecosystem theory, sensors and environmental monitoring, appropriate technologies and citizen-participatory science. It aimed to support and develop the activities that are already going on in institutions at a more grassroots level.

The flagship project realised under that theme is Case Pyhäjoki – Artistic Influences on Nuclear Energy, initiated by Mari Keski-Korsu in collaboration with Hai Art and Finnish Bioart Society. In addition, Maaland is an ongoing research project led by Mikko Laajola around the idea of building a rural laboratory for Pixelache. The Maaland-Renewable Worklab gathering organized in Kemiö and supported by RIXC - Centre for

New Media Culture, explored the following question: What does it mean to have a piece of land to experiment upon, to care for, and have responsibility under/over/inbetween? The Techno-Ecologies themed activities ended with the Yeastograms Workshop - literally on the making of living visuals out yeast, led in December by Lucas Cjzek from the Bioart Club pavillon_35 (Austria), in collaboration with the Finnish Society of Bioart



Programme of events

18-19.4. Networking visit to Kemiö related to environmental education & Maaland (Andrew Paterson+Mikko Laajola+Tuomo Tammenpää)

13-18.7. Maaland gathering & workshops in Kemiö

1-11.8. 'Case Pyhäjoki - Artistic influences on nuclear energy' Expedition (led by Mari Keski-korsu, Andrew Paterson, in collaboration Hai Art and others)

8-11.10. Art+Communication/Media Art Histories Conference contribution in Riga

09-11.12. Yeastograms workshop in collaboration with Finnish Bioart Society (see photo above)

Pixelversity / Techno-Ecologies

Case Pyhäjoki



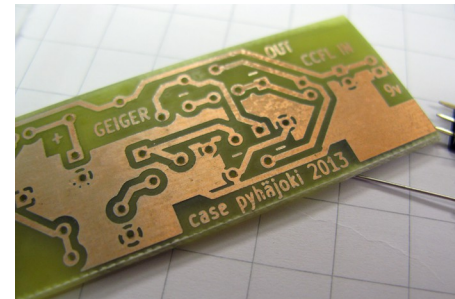
Case Pyhäjoki – Artistic reflections on nuclear influence' is a transdisciplinary artistic expedition, production workshop and presentation events in Pyhäjoki, North Ostrobothnia, Finland, held during 1st to 11th of August 2013.

The sixth nuclear power plant of Finland is planned to be built at Hanhikivi Cape in Pyhäjoki. The aim of the project is to explore artistic perspectives on the vast changes planned in Pyhäjoki, through the planning of a nuclear power plant at the site, and this way of considering energy production and consuming in the world. Artists can not only reflect upon and depict social phenomena and socio-economical relations, but can also situate themselves in between politics, activism and science.

Can art make changes? If so, what would be the creative tools of activism?

Life itself has become increasingly politicized in the new millennium and obviously this reflects on us all. There are plenty of art works that comment on issues seen unethical or wrong, revealing different kinds of world views. Also, there are community art projects that comment for example on the social condition that involves participants from different fields.

But can the border in between art and activism be blurred more? Could it be involving yet aesthetical? Aren't we all activists? What are other ways of activism in addition what we are used to think? And what is the change we are after?



Case Pyhäjoki was initiated by artist Mari Keski-Korsu and became a collaborative work group in between herself, artist-organiser and researcher Andrew Paterson/Pixelache and musician and artist Antye Greie-Ripatti/Hai Art. Other partners were Finnish Bioart Society and Pro Hanhikivi.

Case Pyhäjoki was funded by Kone Foundation and Arts Promotion Centre of Finland.

www.casepyhajoki.info

Maaland–Renewable Worklab

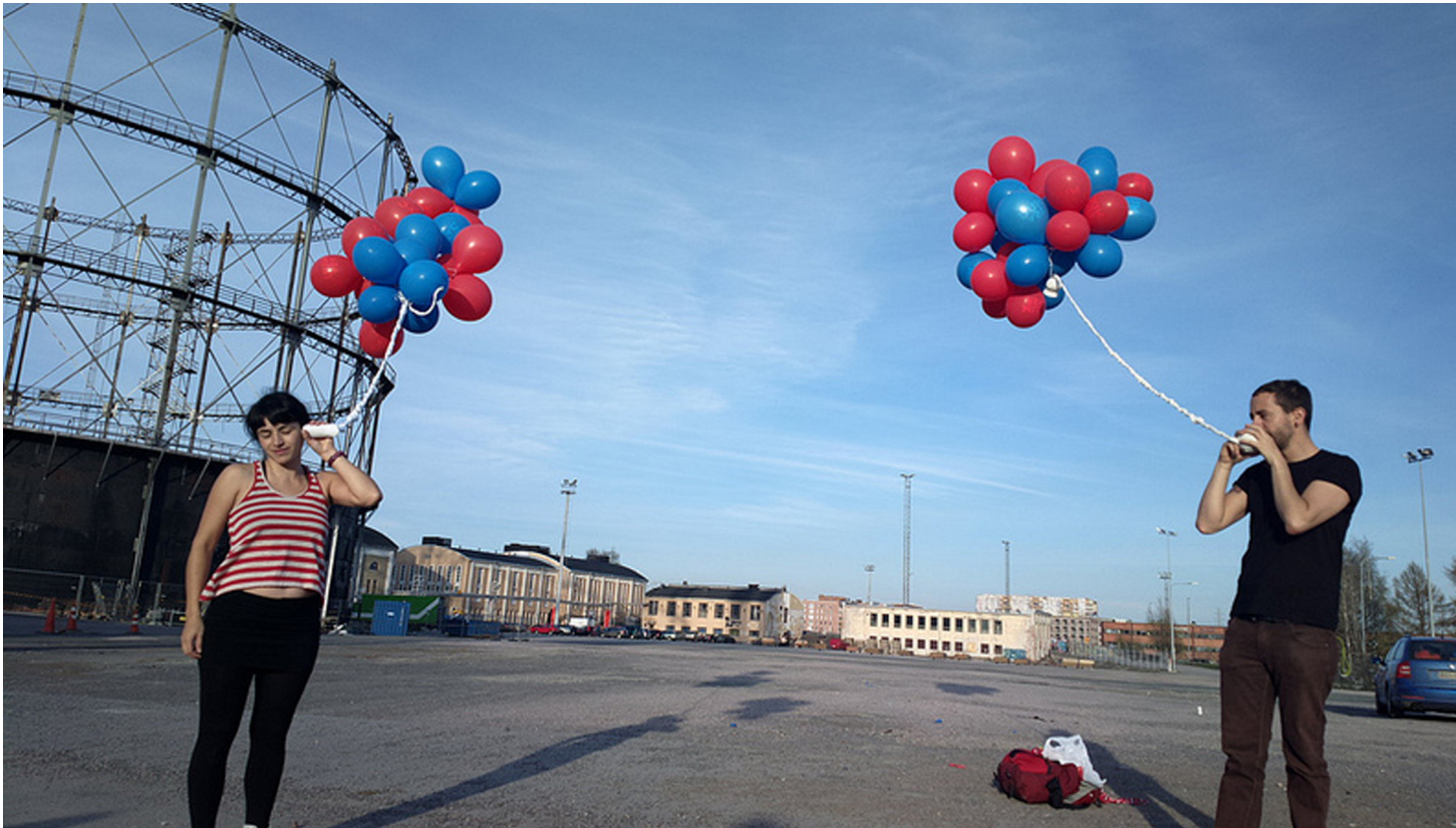


For Maaland – Renewable Worklab, a group of ~15 persons from different backgrounds and interests gathered on Kemiönsaari/Kimitoön in South-west Finland, to explore what might be the open-source 'code', 'hardware' or 'wetware' that comes with the land from different perspectives.

Eight remote international participants also joined the occasion in online video-chat spaces, sharing their ideas, their experience and and in some cases their bit of their land with us.

tiny.cc/maaland

Pixeliversity / Knowledge & Experience Sharing



This theme, continuation of the Virtuality theme of 2012, relates to practices, projects and communities engaged with the creation of digital tools and protocols that facilitate autonomous user control over the data that constitutes digital identity and digital behaviour, and the exploration of the interfaces between public / private, personal / social and real / virtual.

Under this theme, a few larger-scale events were organised such as the Education Engineering Days, the open gathering N1 and Coop Camp, described further on the next page.

Two smaller workshops were also produced under this theme. The first one called a máquina de compartir secretos workshop, led by Constanza Piña Pardo (Chile), organised by Jon Irigoyen, focused on developing small flying electro-acoustic transducers, mainly using waste material, to be used as communication system to share secrets in the public space (see image above). The workshop Cryptography for Postcards, led by Markus Decker and Peter Wagenhuber, organised in collaboration with the Finnish Society of Bioart, introduced the basic principles of cryptography and cryptanalysis with collaboratively created handmade ciphers and postcards.

Pixelache also co-organised a Helsinki Commons info-mapping event at Aalto Media Factory, initiated by Co-P2P special interest group in Aalto ARTS Media, and springboard event for Open cities working group (OKFinland). Additionally, an open round-circle discussion around the visit of Rasa Smite & Raitis Smits from Rixc (Latvia) was organized at AV-Arkki office, about 'media art histories' from the perspective of organisations, researchers or practitioners archiving and representing their own practice.



Programme of events

14-16.2. Archiving gathering visit by RIXC in cooperation with AV-Arkki, Finnish Media Arts

8-10.5. La máquina de compartir secretos workshop by Constanza Piña Pardo (organised by Jon Irigoyen)

15.5. N1 Narrative-themed open gathering at Arcada, Helsinki

16-18.8. Coop Camp: 'Community Infrastructure' at Hirvitalo, Tampere

17-19.10. Education Engineering Days with GameChangers.ru in Helsinki

5.12. Cryptography workshop in collaboration with Finnish Bioart Society

Pixelversity / Knowledge & Experience Sharing

Education Engineering Days



Education Engineering Days is an invite-based 3-day unconference event at Otaniemi (Espoo) and Suvilahti (Helsinki) sites, from 27th to 29th October which gathers an international community of professionals changing the global education landscape.

The term 'education engineers', suggested by the organizers for joint discussion, implies an emerging profile of professionals who successfully develop, implement, and adjust educational practices; and by doing so, aiming to supplement – or to be an alternative to – traditional tertiary education, and to satisfy perceived real world needs.

With the focus on presence-based youth and adult education practices, the event organised by Pixelahe and GameChangers gathered 25 representatives of pioneering education projects from Europe, Russia and United States. GameChangers is an organisation closely connected to Russian IT-business, providing peer-based and curated learning environments, based in St. Petersburg

Topics of discussion included: Visions & missions, Formats & tools, Methodologies, Changing roles, Funding & organisation / business models, Outreach etc.

edu.gamechangers.ru

N1 Narrative-themed gathering



The N1 open gathering event initiated by e-pedagogue Owen Kelly at Arcada University of Applied Sciences on 15.5. It included virtual and physical seminar discussions, as well as a gamified planning session about the social world we are constructing from new and fluid identities.

'N' stands for Narrative, and this is the first in a series of events. Most of us live much of our lives in the ether. We have a mobile phone with us at all times with the result that we are always on and never truly alone. We have maps and geo-positioning on our phones so that we are always traceable and never truly lost. We tweet and update our Facebook status so that we say what comes into our minds when it comes into our minds, and we are rarely truly reflective.

In all of this we are telling each other stories about what we are doing, and from this others read stories about who we are. From all the shards and slivers that we scatter across the 'digiverse', we are piecing together new kinds of identities

narrative.screenfly.org

Coop-Camp



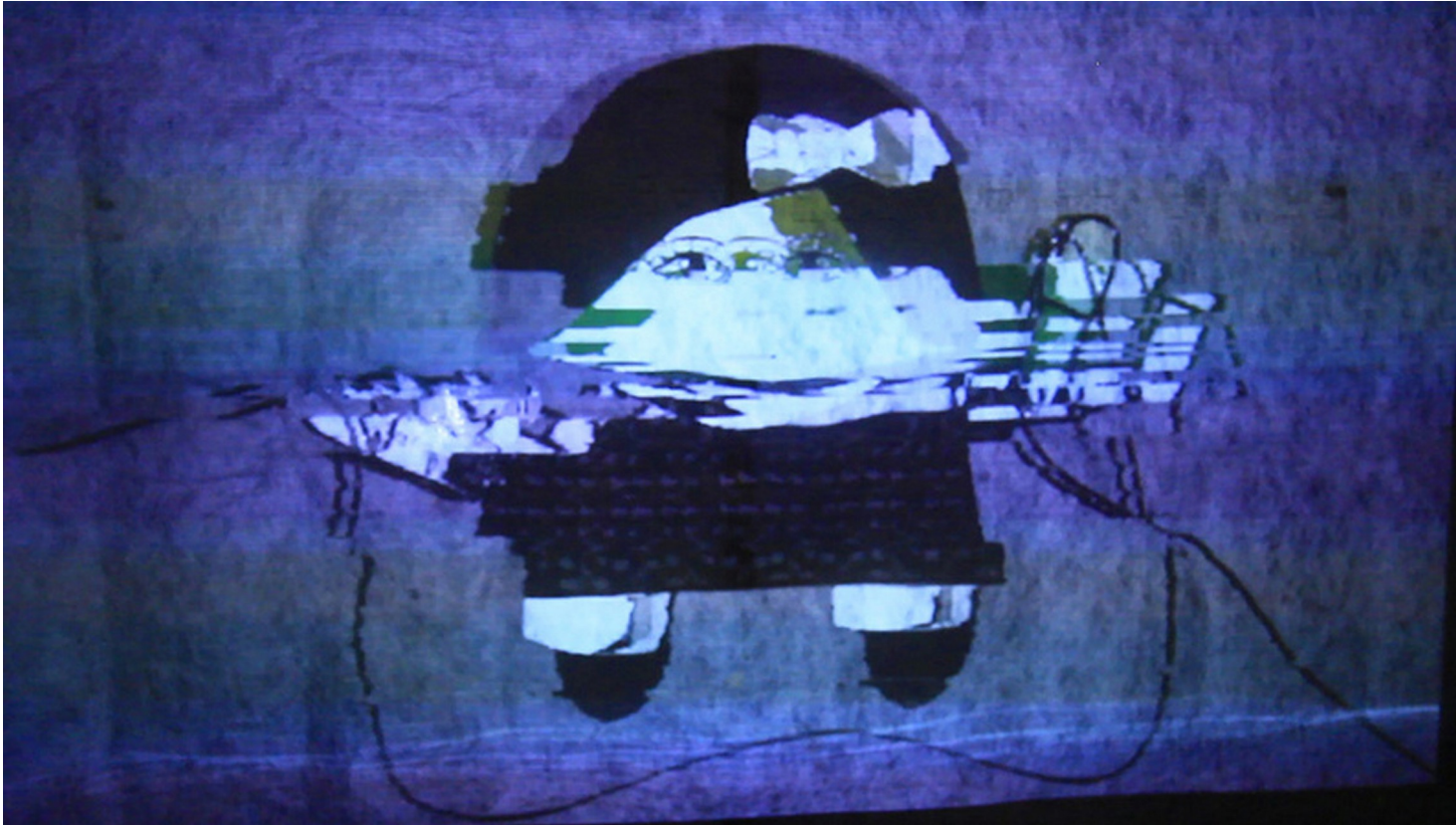
Coop Camp is a trans-disciplinary weekend of events aiming to connect the practice of informal cooperation and formal cooperatives in Pirkanmaa and wider Finland.

The event is facilitated by Pispala Cultural Association and Pixelache Helsinki. This is a 'tietotalkoot' event, an occasion to learn about cooperatives, to share experiences, stories and practices of different types of cooperativism, as well as a place to ask for co-operators, gathering not only local Finnish cultural perspectives and ambitions, but also those of a more international networked scene.

The 2013 Coop Camp focused on Communications infrastructure and featured a keynote presentation by Diego Cruz Martinez (NX/FI), about the relationship between the indigenous people and the media in Mexico and autonomous media projects related to that relationship.

www.pixelache.ac/pixelversity/programme-2013/3rd-annual-coop-camp/

Pixelversity / AV Research



The aim of our AV theme in 2013 was to research & make connections between different experimental VJ/Live Cinema individuals and scenes in Helsinki, and imagine an educational programme for Pixelversity.

The research was initiated in 2012 by Irina Spicaka (LV/FI), as part of a 9-month internship at Pixelache Helsinki with support from the EU Erasmus Programme. Irina Spicaka has since then become a member of our association. As part of this theme, Irina organized a cycle of workshops in Helsinki for the Finnish and regional AV practitioners.

Irina curated the Creative Coding for Live Visuals series of workshops in cooperation with the Pixelache platform and the AAVE festival, using programming and open-source solutions.

Three different workshops and an audiovisual event took place from April 10 to 13, 2013 in Helsinki, at Aalto FabLab (workshops) and bar Sandro (final event – see main image and small image on upper right corner)

www.cc4v.info



Programme of events

10-13.4. Creative Coding for Live Visuals as satellite workshops of AAVE Festival, Helsinki

13.4: Final performance of workshop participants at Sandro, Helsinki

15.9. Acoustic Laptops workshop at Kääntöpöytä

Micro-Residencies

Seungho Lee (FI)



Seungho Lee is a strategic designer, lecturer and design researcher working and residing in Helsinki. He initiated Beef Finland project in 2012 in which he investigated the ramifications of beef-eating at a global scale, as well as in Finnish context, on which he has given talks in Helsinki, New York, and Shanghai. He currently teaches at Aalto University, where he is a doctoral candidate and member of NODUS Sustainable Design Research Group.

Seungho Lee (KR/FI) was the first micro-resident of 2013 from 18-22.2. Based in Helsinki, he joined the Pixelache office to consider and discuss the Food-info-activism theme of Pixelversity programme, from the perspective of strategic design and policy intervention. During his residency time, Seungho discovered Pixelache from the inside. One concrete outcome of his residency was suggestions to Pixelache and Ruonan Tulevaisuus for a novel, down-to-earth, participatory food festival and its name 'Foodcycle'. Later on Seungho Lee became a member of Ruonan Tulevaisuus and played a very central role in the planning and production of Foodcycle festival.

Amanda McDonald Crowley (US)



A native of Australia now based in New York, McDonald Crowley is a cultural worker, curator, and facilitator who specializes in creating new media and contemporary art events and programs that encourage cross-disciplinary practice, collaboration and exchange. Her interests are at the intersection of art, culture, technology, science and social change. She was the Executive Director of Eyebeam Art and Technology Center in New York City from 2005 to 2011. Her contributions to the field of electronic art also include her work as executive producer for ISEA2004 (the International Symposium for Electronic Arts 2004) held in Tallinn, Estonia and Helsinki, Finland, and on a cruiser ferry in the Baltic sea.

After her micro-residency in June, Amanda came back to Helsinki for a longer residency at HIAP in September. Amanda played a very crucial role in the planning of Foodcycle.

During Foodcycle, she gave a keynote presentation entitled Art/Tech/Food, mapping historical and contemporary trade routes of food and how they affect our cultural landscape and well being. Art/Tech/Food also presented the work of a range of artists addressing these issues.

Pixelache Helsinki Festival

Pixelache Festival 16-19.5.2013 // Helsinki & Tallinn



FACING NORTH SOUTH FACING

Pixelache festival 2013 was entitled 'Facing North – Facing South' and was organized as a dual-city event, both in Helsinki and Tallinn during 16-19 May 2013. If every North as its South and every South its North, this was an invitation to alternately face North and South from multiple points of views.

With this theme, Pixelache expanded its on-going Signals from the South programme, that has focused on presenting media, art and technology projects from Africa, South America and Asia since 2009. It explored further the relationships between South and North, looking at these notions from various perspectives, including geo-political, cultural, economical, both on global, regional and local levels.

From a regional point of view, organizing part of the festival in Tallinn poses the question of what it means to bring these cultural actions across the water. Indeed, not only geographically, but also economically, Tallinn is still in the South of Helsinki. The term Talsinki has in the past often been used by Estonians 'to imply that the commercial centre of Tallinn has become the 'Helsinki' living room'. On the other hand the biggest group of immigrants to Finland is Estonians, especially construction workers. There is an economical benefit from relocating South. Shall we and how, deal with this asymmetry as a festival?

Can we build something meaningful between both capitals, that would contribute realizing the Talsinki/Hellina twin city ambition as envisioned by the think tank Demos and the two cities themselves?

From a global point of view, relations between commonly understood North and South are even more complex and the problematics raised by cooperation issues are multifaceted. Various non-western initiatives have been encountered through the Pixelache Network during the past years and Pixelache has contributed to disseminate an approach strongly relying on the potential of open source, DIWO and peer-learning practices. In that context, both individuals and Pixelache nodes have been exploring two-way exchanges and on-going processes. At the time when many countries in Europe today are also starting to face the same water, energy and food dependency crisis than in the South, more than ever we should explore the ideas and initiatives emerging in the South and imagine new ways to tackle together these common issues.

Programme of events

Helsinki (15-17.5)

15.5

10.00-18.00 N1 open gathering
15.00-18.00 Anti-surveillance workshop

16.5

09.00-12.00 dérive (drift) public space
13.00-17.00 Open Demo Afternoon by Usinette
13.00-17.00 metaFestival Technologies works,
15.00-18.00 Anti-surveillance workshop
16.00-17.45 Additional lecture by Mary Mellor
18.00-19.30 Keynote by Escher Tsai (Taiwan)
19.00-21.30 Openings at Eesti Maja

17.5

10.00-12.00 – Urban dérive (drift) in public space
10.00-18.30 – Bricolabs Conference
21.30-00.00 – Ferry trip to Tallinn!
21.30-23.00 – Keynote presentation on the ferry

Tallinn & Naissaar (18-19.5) Camp Pixelache!

Pixelache Festival 2013 / Helsinki 16-17.5



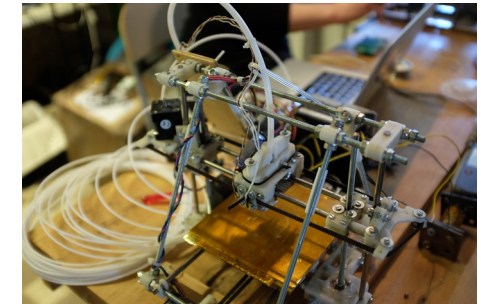
Pixelache Festival 2013 with its theme of Facing North Facing South profiles the work of the Bricolabs mailing list, an independent and dynamic network of people absorbed with sharing, DIY, open source software, hardware and environmental sustainability living in various localities across the world whose online and offline exchange of heterogeneous practices and ideas have driven the network since its formation in 2006. Bricolabs Members from various European as well as Latin American countries and many others, e.g. from Pakistan, Mexico, Indonesia, participated in discussions during the conference held on 17.5 on the theory and practice of networks. A process orientated and open approach to creating (making) was conveyed through "brico-things" an exhibition (collaboratively curated) which opened on the evening of 16.5

Three shipping containers hosted artworks made by various members of Bricolabs: A 'brico-archive' corner assembled by Gabriele Asbesto, including diverse documentation on processes, including "how-to's", video works, texts and brico-objects; A nearby graffiti wall will provide an evolving open canvas for demonstration and exchange of concepts, ideas and views; An interactive installation – VJing Nature - created by Ivan Henriques & Kasia Molga and Erik Overmeire invited us to address inter-connections between sensor technology, data vis and microbiology; In addition, the Sensorium project from Salvador de Bahia was presented on video. (see photo above)



Three keynote speakers were invited to give presentations at three different festival locations: Escher Tsai, founder and artistic director of 'microplayground' (Taiwan), opened the keynote series. Tsai is associated with D.I.Y./D.I.W.O., open source, creative commons and creative industry, and presented in Helsinki on 16.5 at the Finnish Academy of Fine Arts (see upper photo in the middle)

During the Bricolabs conference held on 17.5 in Happi (see photo above), concrete examples of projects were presented, which can reconfigure understanding of geo-politics and discuss collaborative, micro-structures and translocal activities which span, reflect and elide traditional dichotomies of east and west, north and south.



Ursula Gastfall and Alexandre Korber from Usinette and Edgar Afoutou from Defko yaw rek were invited by Pixelache to Helsinki 2 weeks from 15 to 29 may for a micro-production-residency.

Usinette is a hacklab-like organisation. Defko yaw rek is a project initiated by Kër Thioussane in Dakar to bring together a group of local makers. Together they started to develop a thread made from recycled plastic last spring in Dakar, as part of a 2 week workshop held in the context of our friend festival Afropixel. For that purpose they created a plastic recycling machine. The goal was to use this recycled thread for digital fabrication etc, but the thread was not totally functional then and needed to be developed further. During their residency at Made in Kallio they organised a demo day, met local makers and developed the plastic thread to the next stage (see photos above)

Pixelache Festival 2013 / Tallinn-Naissaar 17-18.5



The second part of the festival (18-19.5) called Camp Pixelache, took place in Estonia, in Tallinn and Naissaar. The boat trips from Helsinki to Tallinn and from Tallinn to Naissaar, functioned well as spaces in time for participants to socialize. By the time we arrived on Naissaar, the ice had melted. We had a 100 participants in Camp Pixelache, which was the maximum the infrastructure on Naissaar could take, and of which over 50% were women and with a large amount of new faces

Naissaar (formerly Nargen, Nargö), an island located near Tallinn, 10 km away from the Estonian coast. The island was rumoured to be "Terra Feminarum" (the island's Estonian name literally translates as 'island of women') but had until WWII a historic Estonian-Swedish fishing community.

The island's military history still leaves its traces in tangible and intangible form. Closed as a military island during the Soviet period, the island has a few dozen permanent residents, boosted in summer time with many visitors, a classical music festival, and is a place to respect as an Estonian nature conservation area.

Except for the two keynote lectures planned in advance, typically like at unconferences, the agenda of Camp pixelache was created by the attendees at the beginning of the event. Anyone who wanted to initiate a discussion on a given topic or host a small workshop could claim a time and a space.



Spatial Intelligence Unit's and Kristi Grišakov's keynote was the first public Tallinn-Helsinki twin city presentation and discussion to be held on a common ground, an in-between place – the ferry between the two cities on 17.5 (see upper photo). On Naissaar Mary Mellor, Social Science Professor at Northumbria University, Newcastle upon Tyne (UK) will address issues of alternative, green and feminist economics.



At Tonu Kajuste's 'Omari Kūün' complex we used 3 open spaces during the 'thematic sessions' for presentations/discussions; as well as 2 separate spaces for workshops. Due to the weather, we shifted the Keynote presentation to the 'Naissaare Külalistemaja' hostel. On the Saturday evening & Sunday morning we used the hostel as a base for workshop/participatory activities, presentations & discussions.

Pixelache Helsinki Festival Contributors 2013

1. Agnieszka Pokrywka (Poland/Estonia)
2. Alexandre Korber (France)
3. Antonia Fätkenheuer (Austria) Academy of Fine Arts Vienna
4. Jürgen Neuman (Germany) OHANDA
5. Alejo Duque (Columbia) Bricolabs
6. Amrit Naresh (Germany) OpenOil
7. Anastasia Sulzhenko (Russia) NCCA Kaliningrad
8. Andra Aaloe (Estonia) Ptarmigan
9. Andreas Wagner (Germany/Estonia) Why Services
10. Andrew Paterson (Scotland/Finland) Pixelache
11. Anna Aleksejchik (Belarus) Cinema Perpetuum
12. Anna Rozhencova (Russia/Belarus) House of Culture La mora
13. Annika Kangur (Estonia) UDU
14. Antti Ahonen (Finland) Pixelache / Koelse
15. Antti Ikonen (Finland) Media Lab Helsinki
16. Armin Medosch (Austria)
17. Bram Crevits (Belgium)
18. Brian Degger (Australia/UK) Bricolabs
19. Bronac Ferran (UK) Bricolabs
20. Camilo Cantor Columbia Bricolabs
21. Catriona Shaw (Scotland/Germany) Independent
22. Christina Staldbauer (Austria)
23. Constanza Pina (Chile)
24. Corné Driesprong (Netherlands)
25. Damiano Cerrone (Italy/Estonia) Spatial Intelligence Unit
26. Darko Aleksovski (Macedonia) Independent
27. Dmitry Golynko (Russia) ArtTerritory
28. Ekaterina Chaikina (Russia) GameChangers
29. Eliisa Möistlik (Estonia) Independent
30. Elke Gaugele (Austria) Academy of Fine Arts
31. Erich Berger (Austria/Finland) Finnish Society of Bioart
32. Erik Sandelin (Sweden) Unsworn
33. Felipe Fonseca (Brazil/Germany) Bricolabs
34. Hamilton Mestizo (Colombia)
35. Hannah Harkes (Estonia) Gradodroom
36. Hannu Makkarainen (Finland) Pixelache
37. Helen Pau (Estonia) Spatial Intelligence Unit
38. Irene Agrivina (Indonesia) Bricolabs
39. Ivan Henriques (Brazil) Bricolabs
40. Ivan Novichkov (Russia) Friends of the Baltic
41. Jaana Kokko (Finland) Aalto University
42. Jana Pejotka (Finland) Oyogames
43. Jenni Valorinta (Finland)
44. Jerneja Rebernak (Slovenia) Bricolabs
45. John Hopkins (US) Bricolabs
46. Jon Irigoyen (Spain/Finland) Pixelache
47. Jon Paludan (Denmark)
48. Judith Auer (Austria) Academy of Fine Arts Vienna
49. Kaija-Luisa Kurik (Estonia) Estonian Urbanists Review
50. Karla Schmutzer (Austria) Academy of Fine Arts Vienna
51. Keiti Kljavin (Estonia) Linnalabor
52. Krisjanis Rijnieks (Latvia/Finland)
53. Kristi Grišakov (Estonia/Finland) Aalto University
54. Kristiina Urb (Estonia) Visar Studio
55. Kruno Jost (Croatia) Bricolabs
56. Laura Browne (Finland) Jyväskylä Hub
57. Lena Vanusa Bauer (Austria) Academy of Fine Arts Vienna
58. Liis Luumberg (Estonia) Tartu University
59. Lilian Mengel (Estonia)
60. Maja Kohek (Slovenia) Bricolabs
61. Mara Blome (Latvia) Liepaja Art Research Lab
62. Mari Keski-Korsu (Finland)
63. Mary Mellor (UK) Northumbria University
64. Mathieu Marguerin (France) Mal au Pixel
65. Meri Hietala (Finland)
66. Mikhail Iljin (Estonia) Rönk
67. Mikko Laajola (Finland) Pixelache
68. Mikko Lipiäinen (Finland) Pispalan nykytaiteen keskus
69. Mira Sacher (Austria) Academy of Fine Arts Vienna
70. Moritz Bartl (Germany) Tor
71. Nadège Peter (France) Pixelache
72. Natacha Roussel (Belgium) Bricolabs
73. Nina Ala-Fossi (Finland) Porridge & Potatoes
74. Niko Punin (Finland)
75. Nuppu Stenros (Finland) Pixelache/WÄRK
76. Ojars Saulitis (Latvia) Liepaja Art Research Lab
77. Ott Pilipenko (Estonia) Gallery Tank
78. Päivi Raivio (Finland)
79. Pekko Koskinen (Finland) Reality Research Centre
80. Pete Gomes (UK) mutantfilm
81. Petri Ruikka (Finland) Pixelache
82. Pippa Buchanan (Australia/Austria) Time's Up
83. Raivo Kelomees (Estonia) Estonian Academy of Arts
84. Raquel Renno (Brasil)
85. Rebane, Rene (Estonia) Hobilabor
86. Rehab Hazgui (Tunisia) Independent
87. Roman Osminkin (Russia) ArtTerritory
88. Saara Hannula (Finland) Helsinki University of Technology
89. Sara Milazzo (Finland) Pixelache
90. Sergei Teterin (Russia/Lithuania) Cyland
91. Soile Ollikainen (Finland) Live Herring
92. Sophie Lingg (Austria) Academy of Fine Arts
93. Stefan Lutschinger (UK) Class Wargames
94. Suisalu, Taavi Suisalu (Estonia)
95. Tatjana Machaczek (Austria)
96. Toomas Savi (Estonia) Hobilabor
97. Tuomo Tammenpää (Finland) Pixelache
98. Ulla Jaakkola (Finland) Pixelache
99. Ulla Taipale (Finland/Spain) Pixelache
100. Ursula Gastfall (France) Usinette
101. Viktoria Mayer (Austria)
102. Ville Hyvönen (Finland) Pixelache / Helicam
103. Wojtek Mejor (Poland) Pixelache

First Edition of Foodycle Festival

Foodcycle Transdisciplinary Food Festival



Foodcycle is a transdisciplinary and participatory food festival that brings together artists, designers, scientists, grassroots organisations, students, and consumers in general. It aims to recover the true meaning of ecosystem thinking – a bridge between art, design and science – and a space for sharing ideas for sustainable food in the current and future Finland.

Foodcycle 2013 was a two-day event organised as a collaboration between Pixelache Helsinki and Ruuan Tulevaisuus (Future of Food). Ruuan Tulevaisuus ry is a network of people trying to encourage interdisciplinary discussion on the food system by combining science with grassroots action. It was founded in Helsinki in 2012 by a group of University of Helsinki agroecology students and graduates.

The programme of Foodcycle 2013 was organised around various interpretations of the food cycle, combining theory & hands-on workshops, providing both literally and metaphorically 'food for thought', as well as tools for participants to contribute to improving our food system.



Programme of events

12.9. Day 1 in Viikki

12-17.00 Farmers' market & Food vendors
12-17.00 Aquaponics Workshop
12-16.00 Vermicompost Workshop
12-15.00 Sausage Making Workshop
13-14.00 Viikki Farm Tour
14-17.00 Info Session on Edible Insects
15-16.00 Indoor Talks

13.9. Day 2 in Suvilahti & Kääntöpöytä

10-13.00 Senegalese Food Tour
10-13.00 Open Sorbus Workshop
10-13.00 Creative Study on Tomatoes
13-14.00 Keynotes
14-16.30 Panel Discussions
17-19.00 Lightning Talks
20-23.00 Best Before Dinner Party

Foodcycle Transdisciplinary Food Festival

Day 1 in Viikki



The process of the collaboration between Pixelache & Ruon Tulevaisuus, intense and very enriching for our two very different organizations, demonstrated the strength of transdisciplinary projects

During the first day of the festival held at Viikki Campus on Thursday 12.9, the library square (see picture above), usually grey and empty, was filled with life, people and colours of a farmers market as well as workshop action. Energy was flowing all through the afternoon on the square, as well as all the way into the tropical glasshouse of the library building (see upper right corner image), rarely used, where a few exciting presentations took place.

The farmers market was so popular that most of the farmers sold out their products. Several hands-on workshops were also successfully run on the library square throughout the day.

This transformation could possibly be made a regular event and be successful, considering the amount of people crossing the empty square every day.

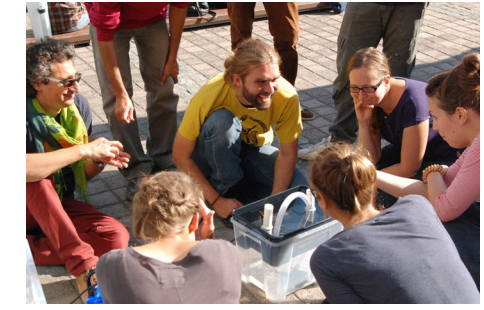


The upper photo was taken during the info session on edible insects led by Ravintola Ötökkä.

Below you can see the sausage making workshop hosted by butcher Lorenzo Ciatti. Lorenzo apprenticed in Dario Cecchini, and worked at Feather and Bone, an artisanal free-range butcher shop in Australia where sustainability is priority. Lorenzo sets out to teach people how to respect and appreciate the animal and use all the parts of an animal not wasting any value.



The upper picture was taken in the Green House of the campus where a presentation by Herttoniemi Food Coop and by Lorenzo Ciatti took place.



Below you can see participants from the Aquaponics workshop led by maker-gardener Mikko Laajola. As part of the workshop, the participants researched aquaponics technics and developed a specific growing system together. The objective was to create an experience for the participants and the public, and to share knowledge about aquaponics systems and their maintenance.

Foodycle Transdisciplinary Food Festival

Day 2 in Suvilahti & Kääntöpöytä



The second day of the event brought us back to Happi, in Suvilahti, for the more formal part of the programme. By organising events both on the scientific campus (also more formal) and in cultural locations (informal in the case of Happi), we hoped that a crisscrossing and cross-pollination of participants from the scientific and cultural fields could happen. The programme at Happi included several workshops in the morning, and in the afternoon 2 keynotes, 3 transdisciplinary panel discussions on Meat, Waste and Food Culture; as well as a lightning talks programme with a very diverse and exciting range of presentations (see images on the right)

Not surprisingly the audience was very different from the previous day, but we did manage to get a diversity of people to attend on both days. Happi offered a relaxed context for discussions all day, and the audience rapidly activated with questions for the speakers. The Lightning Talks didn't really feature any presentations by any scientists as such, so we will need to think of how to encourage academics to participate, and present their research to the general audience in future

The photo above is from the Open Sorbus Workshop that took place in Vaasankatu on the streets and at the Sorbus gallery.



The Food culture panel including Johanna Mäkelä, Aleksi Neuvonen, Saly Wade, Porridge & Potatoes, with Moderator Amanda McDonald Crowley, can be seen on the upper picture.

The lower picture shows a well attended seminar with a very diverse audience.



The upper photo is from the Tasting and Creative Study on Tomatoes led by the collective Porridge & Potatoes.

From Happi, we left to Kääntöpöytä for our closing 'Best Before' dinner: D.I.W.O. pizzas and soups by Chef Antti Nurkka were on the menu. Surprisingly the people who joined us for dinner there, were again a very different group, and the queue to the pizza oven remained long late into the night, and probably many improbable encounters took place there.

Additional Projects

Pixelache Network - Open Sourcing Festivals



How does an organisation open-source their cultural festival? Can we share the process for organising a festival, so that other groups can use it themselves? Can we share the process for sustaining ongoing programs, so that other groups can do this too?

These are the questions that five experimental art, design and technology organisations from the Pixelache Network are asking themselves and others, and exploring, through a mobile circuit of workshops and seminars organized across Europe during 2013-2015.

In the process, Píksel (NO), Píkslaverk (IS), Mal au Pixel (FR) and Pixelache (FI) will gradually be working towards 'open-sourcing' their festival skills and tools to provide them to their UK partner Access Space Network, who will test and utilise them in organising their first major digital culture festival, the closing event of this process

Meanwhile, Access Space Network will share their approach to providing a continuing programme of openness – helping its partners to provide opportunities to learn, create and participate throughout the year.

The pictures on this page were taken during our first visit in Sheffield in April 2014. The larger picture documents our visit at a studio & gallery space called S1 in Sheffield. In the photograph in the upper right corner you can see laser-cut objects on display and made at Access Space Network. The last picture was taken during the mini-festival organised as part of our visit.

The project was launched during Píksel Festival 2013 in Bergen and will travel to the other nodes after that in a seven-stepped process. The final step will take place in Sheffield in the spring of 2015 with Access Space Network organising the first edition of their digital festival



Programme of events

- 11.2013:** Step 1 at Píksel, Bergen, Norway
- 4.2014:** Step 2 at Access Space Network, Sheffield, UK
- 6.2014:** Step 3 at Pixelache, Helsinki, Finland
- 9.2014:** Step 4 at Lorna, Reykjavik, Iceland
- 11.2014:** Step 5 at Píksel, Bergen, Norway
- 4.2015:** Step 6 at Mal au Pixel, Paris, France
- 5.2015:** Step 7 at Access Space Network, Sheffield, UK

Pixelache Members as Embassadors & Pet Projects

Pixelache Members as Embassadors



Pixelache 'Ambassadors' represent Pixelache Helsinki on travels, residencies & events as a sort of ambassador/special envoy. It is an experimental programme of responsibility, but also acknowledges work often done by members, friends and partners of the association.

Basically the ambassador/special envoy takes flyers, and knowledge about Pixelache Helsinki scene to the destination/event, sharing them with appropriate persons or in appropriate contexts, or does local research or negotiation on behalf of Pixelache Helsinki

In 2013, the following Pixelache members represented Pixelache at different events:

Andrew Paterson

- > Ruutiexpo (see picture above), Helsinki
- > Open Knowledge Convention, Tuusula
- > Renew Conference, Riga, Latvia

Nathalie Aubret represented Pixelache at

- > Siemenpuu Buen Vivir Event, Helsinki

John Fail represented Pixelache at

- > Magneetti ry gathering, Rovaniemi

Irina Spicaka & Jon Irigoyen attended

- > Transmediale, Germany

Mikko Laajola

- > Building Man/Cock & Bull Festivals, UK

State Art Prize 2012 & Members' Pet Projects



Pixelache was granted the State Art Prize in 2012 and with it the sum of 15000e. In the spring of 2013, Pixelache's board decided the prize money would be used as follow:

5000e going to Pixelache general 2013 budget to support round-the-year activities
10000e would be divided between Piknik's 15 members at the time, which makes 666,66667e per member.

Members have until the end of 2014 to realise projects. A few pet projects have already been developed.

Several members for instance contributed financially the creation of the Bailux Association (Living Pharmacy) in Brazil. The Bailux association does now exist and it's goal is to protect the traditional culture and knowledge of Pataxó tribes in the Aldea Velha reserve.

As a present for the people from Finland who supported the creation of their association, the Living Pharmacy community will send a present to Finland, a 'cocar' (see picture above), that will most likely be donated to the Tampere tyovaenmuseon activism-themed collection, as an element Finnish citizen participation history. The museum would provide a secure framework for the conservation.

Pixelache Helsinki Partner Organisations & Supporters

Piknik Frequency

**Ministry of Education
and Culture**



**TUETTU ULKOMINISTERIÖN
KEHITYSYHTEISTYÖVAROIN**

AVEK
THE PROMOTION CENTRE FOR
AUDIOVISUAL CULTURE

VIKING LINE

**Austrian Embassy
Helsinki**

**INSTITUT
FRANÇAIS
FINLANDE**



Ptarmigan

Eesti Instituut

**MADE IN
KALLIO**



**KUNTAIDE
AKADEMIA**



]a[academy of fine arts vienna



linnalabor



Game|Changers



**SUVILAHTI
KAAPELI**



Tuglas-seura



Partners / Events Co-organisers

Happi, Helsinki
Suvilahti, Helsinki
Ruoan Tulevaisuus ry, Helsinki
Eesti Maja / Tuglas Seura, Helsinki
Finnish Bioart Society, Helsinki
Aalto Fablab, Helsinki
Made in Kallio, Helsinki
Aave Festival, Helsinki
Helsinki University, Helsinki
Helsinki Hacklab, Helsinki
Kulmahuone, Helsinki
Kierrätystehdäs, Helsinki
Sähkötalo, Helsinki
Kääntöpöytä, Helsinki
Horisontti, Helsinki
Arkadia International Bookshop, Helsinki
Kohtaamispaikka, Helsinki
Porridge & Potatoes, Helsinki
HIAP, Helsinki
Sandro, Helsinki
Koelse, Helsinki
Arcada University of Applied Sciences, Helsinki
Av-Arkki, Helsinki
Reality Research Centre, Helsinki
Ptarmigan, Helsinki / Tallinn
Espoo Kunsthalle, Espoo
Lalla vinde, Kemiö
Wasteland Festival, Kouvola
Hirvitalo, Tampere
Hai Art, Oulu
Polymer Cultural Factory, Tallinn
Linnalabor, Tallinn
Spatial Intelligence Unit, Tallinn
EKKM, Helsinki
Rönk, Tallinn
Serde, Aizpute (Latvia)
Rixc, Riga (Latvia)
GameChangers, St. Petersburg (Russia)
Kër Thiossane, Dakar (Senegal)

Media Coverage

> Paper Press

- * Dituslehti, 'Maaland ja muita innovaatiota', 1.8.2013
- * Annonsbladet, 'Maaland och andra innovationer', 1.8.2013
- * Voima Fifi-webzine: 'Ydinvoimauttavaa taidetta Pyhäjoella' by Anna-Sofia Joro, 13.9.2013
- * Kaleva, 'Taide ja tieteen rajamailla' by Riikka Tuomivaara, 10.8.2013
- * Raahelainen, 'Täällä on nyt oltava' by Saari Ohinmaa, 10.8.2013
- * Keskipohjalainen, Pyhäjoki kiinnostaa maailmallakin' by Pia Räihälä, 7.8.2013
- * Raahen Seutu, 'Tapaus Pyhäjoki taiteen silmin' by Sari Ohinmaa, 6.8.2013
- * Pyhäjokisetutu, Menot by Liisa Loumela 5.8.2013
- * Publication 'At Full Speed> Highlights of academic year 2012-2013', Aalto Media Factory, 'Talking Trashlab', December 2012
- * Nyt - "Mene: Uusi ruokafestivaali Foodycle yhdistää tiedettä ja taidetta' by Arla Kanerva, 12.9.2013
- * HS, Mesta, Kaupunkikysymys, "Mitä Sorbus-pajassa keitettiin?" by Kaisa Hakkarainen, 18.9.2013

> TV & Radio

- * YLETV1, Puoli seitsemän, 'Yeastograms workshop', 23.1.2014 klo 18.30
- * Radio Suomi, aamuohjelma, 'Foodycle', 14.9.2013
- * YLE radio 1, Kultakuume-ohjelma,

> Online

- * www.muurileht.ee, 'Helsingi subkultuuride festival peab Naissaarel mittekongressi', 6.5.2013
<http://www.muurileht.ee/helsingi-subkultuuride-festival-peab-naissaarel-mittekongressi/>
- * www.wadermedia.com, 'Pixelache Festival 2013: Facing North – Facing South', 9.5.2013
<http://www.wadermedia.com/pixelache-festival-2013-facing-north-facing-south/>
- * Helsingin Sanomat, 'Miksi kaikki hajoaa?' by Terhi Hautamä 11.5.2013
<http://www.hs.fi/tekniikka/Miksi+kaikki+hajoaa/a1368163791260>
- * [www.uudisvoog.postimees.ee](http://uudisvoog.postimees.ee), 'Pixelache'i festival 2013: Rahvusvaheline uue meedia festival peab Naissaarel mittekongressi', 14.5.2013
<http://uudisvoog.postimees.ee/?DATE=20130514&ID=311963>
- * in Norden publication 'Culture and Sustainable Development in the Baltic Sea Region', 17.5.2013
<http://www.norden.org/en/publications/publikationer/2013-913/>
- * [www.meie.tallinn.ee](http://meie.tallinn.ee), 'Pixelache varsti Naissaarel', 5.2013
<http://meie.tallinn.ee/node/32923>

Media Coverage

> Online

- * www.meie.tallinn.ee, 'Pixelache varsti Naissaarel', 5.2013
<http://meie.tallinn.ee/node/32923>
- * www.kultuur.ino, 'Pixelache'i festival 2013: Facing North - Facing South', 5.2013
<http://www.kultuur.info/syndmus/pixelachei-festival-2013-facing-north-facing-south/>
- * www.meietartu.ee, '15.-19. mail leiab liinil Helsingi-Naissaare-Tallinn aset uue meedia ja subkultu...'. 5.2013
<http://meietartu.ee/node/14991>
- * Makerfaire Rome Barcamper (youtube reportage), 'Recycling Olympic Games Helsinki', 1.6.2013
<http://www.youtube.com/watch?v=EGXrEsNkInE>
- * [Digicult.it](http://www.digicult.it), 'Creative Coding for Live Visuals. The Nordic-Baltic Open Source Activity' article Irina Spicaka & Krisjanis Rijnieks, 2.7.2013
<http://www.digicult.it/news/creative-coding-for-live-visuals-the-nordic-baltic-open-source-activity/>
- * www.kaupunginosat.net, 'Tuottajatori Foodcycle Viikin kampuksella 12.9', 22.8.2013
<http://www.kaupunginosat.net/viikki/index.php/component/content/article/9-tapahtumat/2576-tuottajatori-foodcycle-viikin-kampuksella-12-9>
- * www.herttoniemi.sanom.at, 'Tuottajatori Foodcycle Viikin kampuksella 12.9. - Viikki', 22.8.2013
<http://herttoniemi.sanom.at/msg/5215b486005a729f69615c00>
- * www.wadermedia.com, 'Camp Pixelache 2013: mobility, diversity and resonance' by Andrew Paterson, 22.8.2013
<http://www.wadermedia.com/camp-pixelache-2013-mobility-diversity-and-resonance/>
- * www.designresearch.aalto.fi, 'Foodcycle – Transdisciplinary Food Festival (12-13 September 2013)', 4.9.2013
<http://designresearch.aalto.fi/groups/nodus/2013/09/04/foodcycle-12-13-september-2013/>
- * www.blogs.helsinki.fi, 'Farmer's Market, workshops and much more at Viikki campus', 9.9.2013
<http://blogs.helsinki.fi/welcometouh/2013/09/09/farmers-market-workshops-and-much-more-at-viikki-campus/>
- * www.newnordicfood.org, 'Foodcycle, Finland', 12.9.2013
<http://newnordicfood.org/news-events/events/event/artikel/foodcycle-finland/>
- * [Ecoartscotland blog](http://ecoartscotland.net): 'Case Pyhäjoki reflects and radiates art&activism', 13.9.2013
<http://ecoartscotland.net/2013/09/13/case-pyhajoki-reflects-and-radiates-art-activism/>
- * [Ruokatieto](http://www.ruokatieto.fi), 'Ruuan käytön tavoissa ja määrissä kehitettävää niin rikkaissa kuin kehittyvissä maissa' by Mariaana Nelimarkka, 16.9.2013
<http://www.ruokatieto.fi/uutiset/ruuan-kayton-tavoissa-ja-maarissa-kehitettavaa-niin-rikkaissa-kuin-kehittyvissa-maissa>
- * www.suvilahti.fi, 13.9.2013
<http://www.suvilahti.fi/en/tapahtumat/foodcycle>
- * [Porridge & Potatoes blog](http://pap-tasters.blogspot.fi), 'We went Foodcycle', 14.9.2013
<http://pap-tasters.blogspot.fi/2013/09/we-went-foodcycle.html>
- * [Ruokaosuuskunta.fi](http://www.ruokaosuuskunta.fi), 'Oma pelto torilla, pellolla, sydämellä & asialla' by Heidi Hovi, 13.9.2013
<http://ruokaosuuskunta.fi/2013/oma-pelto-torilla-pellolla-sydamella-asialla/>

Media Coverage

> Online

* www.acs.aalto.fi, 'Event: Foodycle Festival 12•13 September 2013, Helsinki', 09.2013

<http://acs.aalto.fi/2013/event-foodycle-festival-12-13-september-helsinki/>

* www.menovinkki.fi, 09.2013

[http://www.menovinkki.fi/menot/haku?](http://www.menovinkki.fi/menot/haku?searchDate=30&searchMonth=201308&searchDuration=5&CONTENT=Muu+tapahumat&SUB_CONTENT=&searchLocation=P%C3%A4%C3%A4kaupunkiseutu&searchWord=foodycle)

[searchDate=30&searchMonth=201308&searchDuration=5&CONTENT=Muu+tapahumat&SUB_CONTENT=&searchLocation=P%C3%A4%C3%A4kaupunkiseutu&searchWord=foodycle](http://www.menovinkki.fi/menot/haku?searchDate=30&searchMonth=201308&searchDuration=5&CONTENT=Muu+tapahumat&SUB_CONTENT=&searchLocation=P%C3%A4%C3%A4kaupunkiseutu&searchWord=foodycle)

* www.wherevent.com, 09.2013

<http://www.wherevent.com/detail/Pixelache-Helsinki-Foodycle>

* www.taavisuisalu.com, 'Solar First Aid', 2013

<http://taavisuisalu.com/o/solaraid.html>

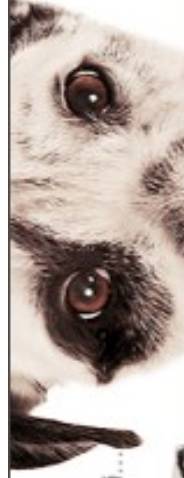
* Theory & Practice Journal, 'Open to Knowledge: 7 innovative Educational Projects' by Ksenia Vityuk, 28.10.2013

<http://theoryandpractice.ru/posts/7937-new-education>

* [designdb.com](http://www.designdb.com) (Korean online magazine), 8.11.2013

<http://www.designdb.com/dreport/dblogView.asp?gubun=1&oDm=3&page=1&bbsPKID=21006#heads>

Sekarotuinen irtomedia joka
hakee, puree, haukkuu ja läähättää....



Yhteiskunta Elämä Taide Uutiset Blogit Kalenteri Kuvareportaasit
Talous Poliittika Aktivisimi Luonto Musiikki Kirjat Teatteri Elävä kuva
Toimitus Mediatiedot Palaute RSS Kirjasto Rekisteröidy Hae, FFI



● Taidefestivaalilla puhutaan rahasta – ja feminismistä

Anna-Sofia Joro

Talous 17.05.2013

Oletko törmännyt laskelmoivaan tyyppiin, joka himoitsee rahaa ja valtaa eikä saa kyllikseen kuluttamisesta?

Taloustieteen vaihtoehtoisia, luonnonomukaisia ja feministisiä näkökulmia tutkiva Mary Mellor on nimittänyt lajin Talousmieheksi, *Economic Man* – joka voi olla myös nainen.

Mellor on "ekofeministi" ja yhteiskuntatieteiden professori Northumbrian yliopistosta Britanniasta. Hän saapuu Helsinkiin elektronisen taiteen Pikseliähy-festivaalille ja on pääpuhujana Naissaarella Virossa, jonne tapahtuma levittäytyy.

Mellor tekee alkuun selväksi, ettei ole enkoistunut epätasa-arvoon työmarkkinoilla tai työpaikoilla. Uusiksi pitäisi panna koko moderni talousjärjestelmä, jossa Talousmies voi rellittää ja viis veisata käyttöksensä ympäristövaikutuksista.

Naisen työtä, jota siis voi tehdä myös mies, on tarjota edellytykset ja siivota sotkut.

"Naiset tekevät suuren osan ihmisen luomiseen ja ylläpitoon liittyvästä työstä, vaikka myös palvelijat, orjat, lapset ja matalan statuksen miehet osallistuvat siihen."

"Olemme luoneet talouksia, joissa korkeaa palkkaa nostavien, arvostettujen ihmisten ei tarvitse tehdä tätä työtä, elleivät he erikseen halua vaikkapa auttaa lasten kanssa ja päästää lastenhoitaja tauolle", Mellor kuvailee.

Pikseliähyssä pohditaan globaalia etelää ja pohjoista. Yksi



"Toivottavasti työurast tulevat joustavammiksi ja kiitpailuhenki vähenee. Voisimme elää hitaammin ja taidemmin", Pikseliähy-taidefestarille vieraaksi tuleva Mary Mellor sanoo.

Luetulmat



- Smash-vitun-ASEM, yhä
- Yllätshyökkäys
- Musiikin tappaja
- Liza Marklundin "tositarinan" seuraukset
- Näkökulma: Kuka todella paljasti Sotšin korruption?
- Nalle viljelee maata

Tuoreimmat kommentit

- Pirkko – Kun Afrikan aika koitti
- pepe – Osallistu... tai kuole nälkään
- mediatyöläinen – Yllätshyökkäys
- Petri Sakkinen – Ohi on
- Petri Sakkinen – Anglophilia and the Lure of Neoliberalism in Finland
- Hilhi – Anglophilia and the Lure of Neoliberalism in Finland
- hulapaloo – Veganismi on elittismiä
- thulla – 63 päivää onnea



Mitä Sorbus-pajassa keitettiin?

18.9.2013 2:00  0  Suosittu  0



Kaisa Hakkarainen
HELSINGIN SANOMAT



Kaupunki notkuu pihlajanmarjoja.

Poikkitieteellinen ja -taiteellinen Pixelache-verkosto viritti viime viikolla Helsingin Vaasankadun Sorbus-galleriaan Avoim Sorbus -työpajan osana Foodcycle-festivaalia. Pajan aihe oli pihlaja (*sorbus aucuparia*).

Mitä siellä oikein keitettiin, pajan vetäjä Mikko Laajola?

Keräsimme Vaasankadulla marjoja ja yritimme valmistaa pakastetuista marjoista kettukarkkeja, hilloa ja viiniä. Kaikille avoin paja saa jatkoa.

Miten ja missä?

Jatkanemme hillojen ja ruoan parissa. Tämä on kuitenkin avoin prosessi. Pihlaja on pyhä puu kautta Euroopan, joten saatamme myös puhua kansanperinteistä tai tehdä taikakaluja.

Missä keitoksia voi maistaa?

Sorbus-galleriassa on tarkoitus järjestää festivaalit, joissa näitä kaikkia tarjoillaan taiteellisissa kontekstissa.

Miten karkkeja tehdään?

Sekoita kaksi kämmenellistä agar agar -hiutaleita, kukkurallinen lautasellinen pihlajanmarjoja ja saman verran sokeria vajaaseen tuopilliseen vettä.



Tomaatit kuuluivat sesongin herkkuihin. Kuva: Jukka Lehtinen.

Related posts:

1. Kellohallin uusi Foodstock-festivaali yhdistää ruuan ja musiikin
2. Mene: Otto Majan taidetta Make Your Markissa
3. Kaikkien aikojen eoppisin b-elokuva yhdistää pirajien ja anakondan
4. Mene: Kino Carusel näyttää klassikkoleffoja

Mene: Uusi ruokafestivaali Foodcycle yhdistää tiedettä ja taidetta

TAPAHTUMAT 12.9.2013, klo 8:00 Arla Kanerva

Vilkin kampuksella ja Suvilahdessa käynnistyy tänään uusi poikkitieteellinen ruokafestivaali Foodcycle. Festivaali kestäää kaksi päivää, ja ohjelmassa on muun muassa tuottajatori, työpajoja ja paneelikeskusteluja.

Mutta mitä poikkitieteellisyys tekee ruokafestareilla?

Tapahtuman järjestäjiin kuuluvan **Atte Penttilän** mielestä tieteentekijät pysyvät liiaksi omissa lokeroissaan. "Foodcycle yhdistää tiedettä, taidetta ja aktivismia," Penttilä sanoo. "Tavoitteena on luoda siltoja eri alojen välille."

Poikkitieteellinen ohjelma korostuu erityisesti perjantain paneelikeskusteluissa, joissa etsitään tiedotteiden mukaan "tulevaisuuden kestäväää ruokajärjestelmää".

Tänään kolmelta kuullaan avajaisosanat, joissa tapahtumaa järjestävät Pixelache Helsinki ja Ruuan tulevaisuus ry kertovat lisää Foodcyclesta.

Lisäksi päivän ohjelmassa on muun muassa Farmers Market -henkinen tuottajatori, jolta pääsee ostamaan tuoretta lähiruokaa suoraan lähialueen tuottajilta.

Penttilän mielestä ruuan tulevaisuus näyttää hyvältä. "Monia ihmisiä kiinnostaa yrittää löytää teltä kohti kestäväää ruokajärjestelmää. Tämä tapahtumakin on merkki siitä."

Täällä on nyt oltava

Tutkimusmatka: 18
hengen Case Pyhäjoki
-tiimi teki Pyhäjokea
tunnetuksi ympäri
Eurooppaa.

Sari Ohimaa

Järjestelmänvalvoja

– This is the place to be now. Täällä kuuluu nyt taiteilijan olla, sanoo raahelaislähtöinen kuvataiteilija Case Pyhäjoen kaveritallilla. Case Pyhäjoen Mari Keski-Korsu ja sari tutukseen hyväksyvän myökkä-yksen saksalaiselta Helene von Oldenburgilta ja skotlantilaiselta Andrew Gry Patersonilta.

Pyhäjoen taiteilijoihin, poliittai-teedien ja -diteedien tut-tusmatka, tuotannollinen tyypaja ja tapahtuma on päätynyt Pyhäjoella. 11 päi-vän ajan 18 taiteilijaa ja tut-tajaa on käynyt tutustumassa Pyhäjoen monesta eri nä-kökulmasta. Ikäkuonoita nä-hint taiteellisiin tulokulmiin avattiin eilen Parhalahden koululla.

Taiteilijalle on ollut ääret-tönsä aikaa pohjata paikan päällä sitä, mitä taiteilija voi-taisi muutosken kohdal-

la tehdä.

– Arvostan valtavasti tätä kokemusta. Tämä antaa mahdollisuuden katsoa tilan-etta silmasta silmään, koh-ta data ongelma, Andrew sa-noo.

– Tämä on aikamoinen lahja, jota nyt pääsee jatko-tusmään. Helene täyden-tää.

Taiteilijan mahdollisuu-det ovat tällä hetkellä tuntees-sa jaotomat.

– Voimme tehdä paljon.

Kädet ovat vapaat, voimme tehdä jotakin kaunista, va-lehdella, tehdä jotain haus-kaa, mitä vain, Helene sanoo. Hänä kiinnostaa turkia miten pitkälle taiteessa voi-vat mennä. Hänä kiinnostaa viemä. Se on kokeilua, tur-kinnista. Hän kiinnostaa tut-tusmatkista. Hän kiinnostaa tut-tusmatkista. Hän kiinnostaa tut-tusmatkista.

Taiteilijat eivät vain ole ol-leet Pyhäjoella pelkkä suus-takatsija ja havainnointi. He-tä kiinnostaa myös taiteen-työ. Se, että kirjoitan sadaksi sen-mitä täällä tapahtuu, ei ole

aktivisminä, Helene toteaa. Andrew on kumppanior-ganisatorin ominaisuudes-sa pitänyt yllä yhteyksiä muuhun maailmaan sosiaali-sen median kautta. Tiedottei-lä on ollut kiinnostusta tut-tajien tutkimusmatkasta on ot-tanut erittäin intensiivinen.

neet joessa. He ovat myös ilmeiset, et-tä heitä tullaillaan, katso-enä niin kuin ennen oli. Ma-ri jatkaa.

Pyhäjoki tulee nimenä taiteilijoiden tutkimusmat-kan yhteyksissä. Pyhäjoen taiteilijoiden tutkimusmat-kan yhteyksissä. Pyhäjoen taiteilijoiden tutkimusmat-kan yhteyksissä.

Olla paikkassa, jollaista ei-olemmme täällä, Mari sanoo. Olla paikkassa, jollaista ei-olemmme täällä, Mari sanoo. Olla paikkassa, jollaista ei-olemmme täällä, Mari sanoo.

– Ja jos ydinvoimala tulee,

muutos on sitten vielä kom-pi. Eli mikä on ole koskaan enä niin kuin ennen oli. Ma-ri jatkaa.

Pyhäjoki tulee nimenä taiteilijoiden tutkimusmat-kan yhteyksissä. Pyhäjoen taiteilijoiden tutkimusmat-kan yhteyksissä. Pyhäjoen taiteilijoiden tutkimusmat-kan yhteyksissä.

Olla paikkassa, jollaista ei-olemmme täällä, Mari sanoo. Olla paikkassa, jollaista ei-olemmme täällä, Mari sanoo. Olla paikkassa, jollaista ei-olemmme täällä, Mari sanoo.

– Ja jos ydinvoimala tulee,

– Me pidämme Pyhäjoen nimeä yllä, joten jotakin sel-läistakin käynnimme jättää taakseen, Andrew sanoo.

Ei leire mikään yllätyk ke-nellekään, että taiteilijat vas-tustavat tutkimusmatkan ra-koja. Pyhäjoen taiteilijoiden tutkimusmat-kan yhteyksissä.

– Se olisi sosiaalinen trage-dia, Andrew sanoo. Helene pelkää erityisesti ydinajateria, jolle ei ole vielä-kaan löydetty lopullista rat-kaisua.

– Itse pysty ainakin 30 000 vuotta. Mitä täällä oli 30 000 vuotta sitten? Jaa?

SARI OHIMAA



Muutostieteiden tohtori ja kuvataiteilija Helene von Oldenburg, taiteilijajärjestö Mari Keski-Korsu ovat kokeneet innostavat 11 päivää Pyhäjoella. Eliä tämä jättä tähän.

Kansainvälinen joukko tekee taiteellisia tulkintoja ydinvoimasta

Pyhäjoki kiinnostaa maailmallakin

Pia Riihala

PYHÄJOKI (KP)

- Kuulieto, sieltä kuuluu koko ajan vähän naksahduksia. Se johtuu luonnon taustasäteilystä, jota on Suomessa aika paljon.

Suomessa asuva itävaltalainen taiteilija **Erich Berger** esittelee säteilyilmastinta, jollaista hän on rakentanut Pyhäjoella brittitaiteilija **Martin Howsen** kanssa. Tampereelta löytynyt toriumia sisältävä kivi saa ilmaisimen naksuttamaan kiihkeämmin.

- Olemme ottaneet kiviänytettä Hanhikiveltäkin, ja huomenna menemme Vihtannin vanhalle kaivokselle mitailemaan, kertoo Howse.

Miehet ovat mukana 11-päiväisessä Case Pyhäjoki -tapahtumassa, jonka aikana 18 taiteilijaa ja tutkijaa eri puolilta maailmaa pyrkii tuottamaan poikkeuksellisia ja -tieteellisiä tulkintoja ydinvoimasta.

Säteilyilmastin itsessään ei ole taiteilijakaksikolle pääasia.

- Tämä laite on vain yksi mahdollisuus ymmärtää säteilyä ilmiönä. Radioaktiivisuutta mystifoidaan, ja haluamme tällä riittää aiheesta mystiikkaa ja tehdä siitä konkreettisemmän, Berger selvittää.

Miesten ideana oli rakentaa säteilyilmastin niin yksinkertaisista osista, että ne ovat kenen tahansa saatavilla. Joitain ilmiäisiä on tarkoitus jättää malliksi Pyhäjoen kirjastoon *raamattukirjan kera.*

Työn tuloksia esitellään

Case Pyhäjoen taiteellinen johtaja ja vastaava tuottaja on kansainvälinen taiteilija **Mari Keski-Korsu**.

- Minua kiinnostaa se, mikä voi olla taiteilijan perspektiivi tällaiseen tilanteeseen. Ydinvoimalahan on aivan valtava projekti, ja se aiheuttaa hirveitä kivoja ihmisten välillä.



Taiteilijat **Erich Berger** (vas.), **Mari Keski-Korsu** ja **Martin Howse** testaavat itse rakennettuja säteilyilmastimia erillisillä kivistä. KP/PIA RIIHALA

Keski-Korsu on yllätynyt siitä, miten laajasti Pyhäjoki kiinnostaa.

- Hakemuksia tähän projektiin tuli vaikka kuinka paljon USA:sta ja Australiasta asti, ja kaikkimaiset osallistujat ovat japanilaisia ja Hongkongista. Se osoittaa, että Pyhäjoki on tällä hetkellä todella erikoislaatuinen paikka.

Case Pyhäjokea rahoittavat Koneen Säätiö ja Taiteen Edistämiskeskus. Osa tutkijoista työskentelee omalla tutkimusrahoituksellaan.

Osallistujat ovat aluksi tutustuneet ympäristöön ja aihepiiri-

riin Pyhäjoella, ja omien projektien parissa työskentely on vasta alkamassa.

- Yksi ajatus on tehdä Hanhikiveltä radiolähetyksiä, joissa kuuluisi paikan äänimaisema. Muutkin ideat liittyvät paljon siihen, miten paikan nykytilaa saataisiin talennettua, Keski-Korsu kertoo.

Case Pyhäjoki päättyy sunnuntaiin Parhahäiden koululla pidettävään tilaisuuteen, jossa esitellään työskentelyn tuloksetkin on odotettavissa.

- Olemmeideoineet muun muassa Atomic Olympics kisaa,

keskustelu ydinvoimasta on niin Pyhäjoelle paikallistunut. Tshernobyli osoitti, etteivät nämä laitokset tunne rajoja. On yllättävää, ettei koko Suomi puhu Pyhäjoen laitoksesta kansallisen uhkana, Berger ihmettelee.

- Luulisi, että ydinvoiman aika on jo ohi, mutta se vain jatkuu kuin jokin outo krapula, sanoo puolestaan Howse.

Taiteilijat eivät kuitenkaan halua neuvoa ketään. He kokevat olevansa näkökulmien avajia, joiden tavoitteena on provokoida ihmisiä muodostamaan omat mielipiteensä.

Maaland ja muita innovaatioita



Tuomo Tammenpää.

► Maaland projekti on mielikuvitus. Sen ymmärtämiseen vaaditaan tietynlaisia avarakajaisuuksia.

Kärkylässä pidetyn työpajan tuloksia ihmeteltiin viikkokokouksissa Villi Landessa. Työpajan tarkoitus oli selvittää voisiko joidenkin maa-alueiden jokamiehen oikeuksia laajentaa koskemaan viljelyä ja rakentamista. Ideoita tuli monia ja niistä keskusteltiin, konkreettisia tulostakin syntyi, kun työryhmä koemielessä valoi kaislaharikon, seivittäkseen voisiko kaislaa käyttää eristeenä rakennusmateriaalissa. Samalla saataisiin käyttöä kaislotuonnelle ranta-alueille.

– Työpaja on vasta alussa ja nyt oli vain tarkoitus tuoda ideoita esille ja polttaa ylipäänsä mahdollisuuksia tällaiseen, Tuomo Tammenpää kertoo.

MAALAND PROJEKTIIN liittyy tavallaan myös kierrätyksellisiä materiaaleja rakennettuun tuulivoimala. Osia on hyödynnetty muun muassa polkupyörässä.

– Jos on paha maata, niin tarvitsee energiaa tehdäkseen siitä jotain. Tällainen "tee se itse" -voimala sopii hyvin ideologiaan yhteisestä maapalasta. Tuomo kiteyttää yhteyden Maaland projektiin. Maaland-työpajan tarkoitus on kehittää tuulivoimaa eteenpäin ja tehostaa sen toimintaa. Tuulimylly on alunperin rakennettu yhdessä Aalto-yliopiston oppilaiden kanssa. Piirustukset ovat ilmaiseksi jaossa internetissä ja tuulivoimalan voi rakentaa kuka tahansa. Materiaaleja voi myös muutella saatavuuden mukaan. Maaland työpajan projekteja yhdistää myös voi-

toa tavoittelun asenne.

– Me kehitetään niin pitkälle kuin osataan ja annetaan tulokset vapaasti eteenpäin, joku muu voi kehittää sitä eteenpäin, Tuomo selittää.

ILLALLA, PIDETTY Seeds Underground Party on vastalause suurien viljelijöiden lisensoimille siemenille. Lisensointi rajoittaa siementen keräystä ja keskittää siemenkauppaa. Maa-

ilmalla onkin levinnyt Shu Lea Cheangin julmien sarja, jossa vastalauseena vaihdetaan siemenä kerton samalla niiden tarina eteenpäin. Kemiössä pidetyssä juhlassa muun muassa suomalaisia herneitä lähti maakalle tuntemaonta kohden. Siementen kulkeman matkan voi tarkastaa nettistä osoitteesta www.seedsunderground.net.

JJ



Fr./Vas.: Andrew Paterson, Rasa Kavallauskaite, Janne Rauhansuu, Ilari Toivettula, Anna Rauhansuu, Heidi Finska och/ja Peppi Punin.

DEC EMBER 2012

> HIGHLIGHTS

> AMF Gallery

>> Finland in Eye and Lens.
Photographs by Jee Wee Ong

Talking Trashlab

Trashlab invited artists, designers, hackers, makers, re/up-cyclers, activists and researchers to collectively tackle material and electronic waste.

Trashlab emerged in 2012 as a community of people who focus on experimental art-design-technology practices between hacker and maker cultures within the context of re/up-cycling and the increased availability of new fabrication tools.

Social gatherings brought together the new staff members of Aalto FabLab and local independent makers from Helsinki and Tallinn. Together, they discussed possible guest lecturers for the future. Aalto Media Factory's support for the *Talking Trashlab* project made it possible to structure the programme around monthly

lectures. All lectures were streamed and archived online, and the research interviews resulted in an overview of what was good, bad and ugly.

Several maker gatherings took place throughout the year; they were organised by Pixelache Helsinki, a transdisciplinary platform for experimental art, design, research and activism. Trashlabbers gathered and worked together at Aalto FabLab, at Camp Pixelache, at the Wärk Festival and Wasteland Festival, and in Tallinn at the Culture Factory Polymer.

Additionally, the *Light is History* project was developed during this collaboration process, and the recycled material-based public art installation and research objective were presented at the Wärk Festival in Helsinki in late autumn 2012. A research paper based on the project was presented at the Inclusive Museum Conference in Copenhagen in spring 2013.

The goal of the Trashlabbers is to continue exploring practice-based research pedagogy in waste and to create a social platform for future activities. Pixelache has continued in 2013 with monthly re/pair-café events at various locations and waste management site expeditions in the Helsinki area.

CORE TEAM

Monthly lectures coordinated by Andrew Paterson | Dual City workshops and research interviews by Cindy Kohtala | Streamed & archived documentation by Mikko Laajola | The cross-disciplinary project Light is History by Karthikeya Acharya & Samir Bhowmik

COLLABORATIVE PARTNERS

Karthikeya Acharya | Antti Ahonen | Reet Aus | Samir Bhowmik | Jennifer Gabrys | Peter Kuria Githinji | Cindy Kohtala | Mikko Laajola | Anu Laine | Judith Meijer | Sara Milazzo | Anu Määttä | Roland Pretz | Päävi Ralvio | Toomas Savi | Rene Rebane | Justin Tyler Tate | Ernest Truely | Maria Törn | James Wallbank | Diana Wildschut | Harmen Zijl | Aalto Media Factory

WANT TO TALK TRASH?

trashlab.info
andrew@pixelache.ac

The research interviews resulted in an overview of what was good, bad and ugly.

